

TRAVEL PLUS+

Your Travel Coordinator

MALAWI

2023
2ND ISSUE

ONLINE
VERSION

THINGS TO DO

Things to do in Blantyre

LEARN POTTERY

Learn Pottery Making

ONE DAY GETAWAY

Escape to Chikwawa

TWO DAY GETAWAY

Escape to Kasungu

MALAWI ENTERTAINMENT

Apongozi Tv Series

10 POPULAR
DESTINATIONS
in Malawi

CONTENTS

COVER STORY

04 10 Popular Destinations in Malawi

Get to know the most popular destinations in the Warm of Africa, Malawi.



FEATURES

14 Art In Malawi

Discover the different forms of art blooming in Malawi.



18 Kasungu Trip

Planning your 2 day trip to Kasungu.

22 Malawi Entertainment

Find out more about "Apongozi Tv Series".

26 10 Things To Do in Blantyre

Discover a new Blantyre you never knew about.



30 One Day Getaway

Escape to Chikwawa.

34 Discover Pottery Making

Learn Pottery Making in Lilongwe.



18



30



34

EDITORS

Note



Thandizo Mbeza
Chief Editor

Leisure travel began centuries ago with the goal of relaxation and enjoyment, just like in modern times. A quick Google search will reveal that leisure travel began in ancient Rome among the elite. Now, even individuals who may not be described as elites now travel for pleasure in their own country, to explore different attractions.

Almost everyone has the desire to travel at times, or perhaps it's just me, but deciding where to go in Malawi can be difficult. When people in Malawi think of a holiday or a break, they only think of the lake. It is unfortunate that certain locations are unknown to many Malawians. As someone who was also on the bandwagon of only preferring the lake, I recall being awestruck by the magnificence of Mulanje Mountain, sometimes known as the "Island in the Sky." I did not expect that I would love hiking the massif. The point I'm trying to make is that there are more beautiful locations to visit in Malawi than just the lake.

It is with great pleasure that we present you this third edition of Travel PLUS, which begins with the piece titled The 10 Most Popular Destinations in Malawi, with comments from industry professionals. We hope that this and the other articles in this issue motivate you to travel more. Enjoy!

Editorial & Creative Team

- Thandizo Mbeza Chief Editor
- Douglas Katopola Editor & Graphic Designer
- Maxwell Kalele Graphic Designer
- Steve Govati Editor
- Sydney Mandala Photographer
- Dennis Mulera Designer & Photographer
- Elizabeth Kamanula Sales & Marketing
- Kiyomi Ito Art Director
- Ryosuke Shimizu Executive Director

Published by Design and Printing PLUS



Mumbo Island in Mangochi

10 POPULAR DESTINATIONS *in Malawi*

Malawi is known as the warm heart and widely known for the lake but there are also different stunning destinations in Malawi that attract tourists including mountains, national parks, as well as other attractions. Amongst the destinations, some stand out as the most visited hence the most popular.

Travel PLUS interviewed 18 tour agencies that run inbound tours to inquire about the top three most requested destinations by their clients. We ranked the destinations from position 1 to 10 depending on the total points for each destination.



Scoring Method

Tour operators were asked to name the first, second and third most requested destinations by their clients. The following Points were given:

First Choice	= 3 Points
Second Choice	= 2 Points
Third Choice	= 1 Point



Scan QR Code
for Google map
directions



Ranking
1

Liwonde National Park

Location: Machinga **29 Points**



Liwonde National Park is the most popular national park in Malawi located along the Shire River. The park consists of different species of wild animals due to efforts to revive the deteriorating park several years ago. Cheetahs, Lions, Black Rhinos, and Wild Dogs have been introduced at the park between 2016-2021. This makes the park a favourite for those who love Safari trips and want to experience the wild. The park also has different accommodation facilities available as well as other interesting activities such as night safari, birding, and the exceptional boat safari which is regarded as one of the best in Africa.

REASONS

Liwonde National Park is one of the premier national parks in Malawi because of the number of animals they have there and also the shire river. Clients can do the safari, game drive and they are also able to do boat safari.

Theresa Kalizang'oma | The Travel Centre

The most requested national Park is probably Liwonde because of the way it has been organised, the amount of hours you can spend on the Shire River is much more.

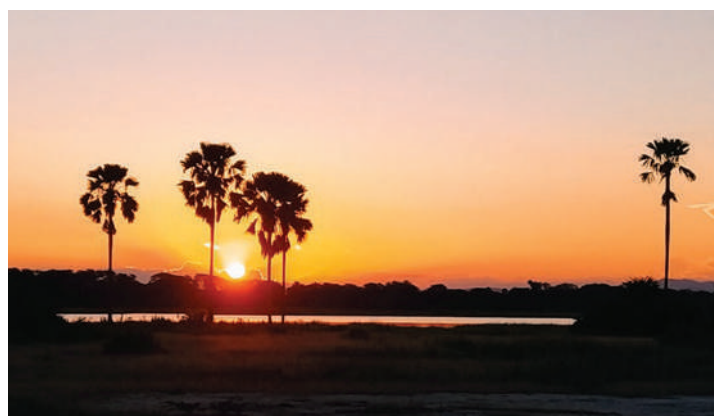
Francesca Guazzo | Co-Managing Director - Africa Wild Truck

In Liwonde you will be having tea, and an elephant will pass by that's what makes a destination popular. People want to have that experience. People want to have that feeling that they were close to a lion or an elephant, the fact that they can see animals close makes it a highlight for them.

Dorothy Daka | Sales Consultant - Orbis DMC

In Malawi, the traffic is not that much compared to South Africa, people can get direct experience and connection to the animals. It's also easy to see the big five in Liwonde National Park and people love that.

Violet Mzembe | Business Assistant Manager - Adventures with Colby Expedition Company



Ranking

2

Mulanje Mountain

Location: Mulanje 21 Points



REASONS

Hiking is quite a key interest for a lot of people... Mulanje is still a tough hike but it's a bit easier and affordable than the popular Kilimanjaro, there are no groups of other people hiking up and down.

Dilo Van Commenee | 1 2 Travel

Mulanje Mountain is the highest mountain in Malawi and southern-central Africa. It is easily accessible from Blantyre and Zomba and has many beautiful waterfalls like Likhubula Falls.

Yvonne Masikini Banda | Managing Director - Floodgates Tours

People love Mulanje because of the different routes, its different views, and challenges. There are stunning waterfalls, streams, and Dziwe la Nkhalamba where people love to take a swim.

Violet Mzembe | Business Assistant Manager - Adventures with Colby Expedition Company

Mulanje is the third largest in Africa. With the tea, it has very beautiful scenery.

Theresa Kalizang'oma | Travel Centre


At 3,002 meters, Mulanje Mountain is the highest in Malawi. The 'island in the sky', as it is usually referred to, is located in the southern part of Malawi and has Sapitwa Peak as the highest point. The massif is the perfect destination for people who love to hike and want to conquer the famous Sapitwa or other peaks like Chambe, Africa's longest rock climbing spot. The massif is indeed a place for the adventurous but Mulanje also has some spectacular views for those who love sightseeing and waterfalls as well as streams including the famous Dziwe la Nkhalamba. Mulanje is also riddled with several accommodation options so you can rest a day before or after your hike. There are also several huts on top of the mountain offering lodging facilities but you have to bring your food that can be prepared at the hut.





REASONS

In the region, we don't have a freshwater lake which is also a national park and World heritage site at the same time.

 **Johnnie Mwanavuli Kabwilo** | Managing Director - Misuku Expeditions

There are some species of fish that you can't find anywhere in the world. Apart from that, the water is very clear, and there are a lot of water activities.

 **Theresa Kalizang'oma** | Travel Center

With Cape Maclear, a lot of people know it as the center of Lake Malawi where you have the most water-based activities and a wide range of lodge options.

 **Amelia Sprong** | Sales and Marketing Director - Land & Lake Safari.

Ranking
3

Cape Maclear

Location: Monkey Bay **17 Points**



The scenic Lake Malawi is the go-to place for most people because of the various activities one can enjoy at the lake. Cape Maclear is a favourite spot for most people who want to do fun activities like scuba diving, snorkeling, Kayaking, swimming, and several other activities. Cape Maclear is a UNESCO world heritage site and is home to hundreds of cichlid fish. Locally known as Chembe, Cape Maclear offers an environment where one can relax on the golden sandy beaches. The good thing about Cape Maclear is that there are different accommodation options to suit almost everyone.





Ranking
4

Likoma Island

Location: Likoma

7 Points



Likoma Island is located in the Mozambique waters on Lake Malawi but is part of Malawi territory. The island has lovely beaches, clear waters, cichlids as well as the historical St. Peters Cathedral. The island also has the luxurious Kaya Mawa, Ulisa Lodge, and other accommodation facilities. Likoma Island is known for different kinds of water activities with snorkeling and diving topping the list. Getting to Likoma Island is by boat or aircraft which makes the journey even more breath-taking as you will be enjoying the impeccable view of the lake on your way. The island is only 17km², so you can tour the island on foot.

REASONS

It's an adventure, you fly from Lilongwe to Likoma with Nyasa Express. It's an hour's flight. It's lovely!

👤 Harry Kandani | Travel Consultant - Ulendo Safari

Likoma Island is famous because David Livingstone once stayed there. It is also popular because of the beautiful Saint Peters cathedral which is the same size as Winchester Cathedral in the UK.

👤 Limbani Bar Dinga | Manager - The Giants Travel

It offers a glimpse of the beauty of the country. Our clients enjoy special moments and engaging in nature through different activities, such as swimming.

👤 Amba Vagani - Masamba Adventures



Ranking
4

Nyika National Park

Location: Rumphi

7 Points



In the northern part of Malawi lies the oldest and largest national park in Malawi, the Nyika National Park. The magnificent park boasts stunning scenery comprising streams, lush green forests, and the Nyika Plateau. The mountainous terrain with green vegetation is home to different animals such as antelopes, leopards, Zebras, Hyenas, Jackals, Elephants, and Buffalo. Birdwatchers are also in for a good treat, as the park has over 400 species of birds including the rare Denham's bustard. Nyika National Park is also popular for trekking and mountain bike riding. The impeccable Park will leave you wanting to come back soon.

REASONS

I don't think in the region you would find a national park with features like Nyika. Clients are interested in the unique features.

👤 Johnnie Mwanavuli Kabwilo | Managing Director - Misuku Expeditions

Nyika is the longest and first national park in Malawi. Here people love to see the grassland and the different animals. People love the place for sightseeing and game drives as well. Hiking is another popular adventurous activity.

👤 Violet Mzembe | Business Assistant Manager - Adventures with Colby

The animals, flatland, plateau, and the green vegetation that is there is a good attraction that people are happy to see when they visit.

👤 Mwabi Chisi | Galaxy Travel





Ranking
6

Zomba Plateau

Location: Zomba

6 Points



Zomba is the oldest capital city of Malawi located in the southern east of the country. The city is not only known for its historical sites but the spectacular Zomba Plateau. With the highest peak at 2,087 meters above sea level, the plateau has vast forests, streams, and some waterfalls. It is one of the plateaus in Malawi that can be accessed easily as it has a tarmac road reaching the top of the mountain. Hiking is one of the popular activities people enjoy but some people also do some jogging in the morning. The plateau is also a favourite because of the presence of Sunbird Kuchawe Hotel which is located on top of the plateau. Enjoying a meal or a relaxing nap in a beautiful hotel on top of a mountain is an experience most crave for.

REASONS

Zomba plateau is unique and historical. It has natural beauty with unique weather patterns. It is the most attractive natural place in Zomba

📍 Yvonne Masikini Banda | Managing Director - Floodgates Tours

When you go up the mountain you will find some interesting places, there is Chingwe's Hole that has some historical and magical issues, and then the Queen's view as well as the emperor's view.

📍 Theresa Kalizang'oma | The Travel Centre

Zomba has a history as it was the capital city. Secondly, the weather at Zomba Ku Chawe is different from other areas. The view itself is very recommendable for tourists

📍 Harry Kandani | Travel Consultant - Ulendo Safari



Majete Wildlife Reserve

Ranking
7

Location: Chikwawa

5 Points



Majete wildlife reserve is located in southwestern Malawi, 70km away from Blantyre city. The reserve went through massive animal translocations and reintroductions to restore it. The reserve is famed for being the first place in Malawi where tourists can see the big five as well as some previously-endangered species. The reserve is a darling to many as people can enjoy game drives, night safari, game walks, and birding in the enchanting woodlands and river valleys. Tourists easily access the reserve as it is only a one-hour drive from Chileka Airport in Blantyre. Accommodation is also available within the vicinity of the picturesque reserve.



REASONS

The conservation efforts going into Majete and a large amount of international coverage that it has received has made it to be popular.

📍 Amelia Sprong | Sales and Marketing Director - Land & Lake Safari

Most of the international community loves animals because they don't have animals unless is a zoo. So, they want to see animals in their natural environment

📍 Franciwel Phiri | Managing Director - Small Steps Adventures

People want to have the possibility to be in touch with nature, wildlife and knowing more about animals. They can experience this at Majete.

📍 Francesca Guazzo | Co-Director - Africa Wild Truck

Ranking
7

Dzalanyama Forest Reserve

Location: Lilongwe

5 Points



Dzalanyama Forest Reserve formerly known as Central Angoni Highlands Game Reserve is located 40 km southeast of Lilongwe in central Malawi. The reserve has a great landscape comprising hills, natural pools, and waterfalls. The forest is also home to some rare species like Boulder Chat, White-tailed flycatcher, and several others. This is a good place that is close to the capital of Malawi where you can indulge in nature. The forest is also perfect for trekking and mountain biking on the hills that are between 1100m and 1650m above sea level. Visitors can rest at the cozy Dzalanyama Forest Lodge which offers different accommodation options. The lodge also allows self-catering for those who do not prefer the fully-catered option.



REASONS

Dzalanyama is a place that is beautiful and it's very close to Lilongwe city. A lot of people don't know it but it has a good landscape.

Eliza Chimbaya | Branch Manager - Rennies Travel



Ranking

9

Senga Bay

Location: Salima

3 Points



Senga Bay is located in Salima and is the closest shoreline to Lilongwe. Senga Bay has several lovely beaches and luxurious accommodation options. One of the popular beaches is Livingstonia Beach which is a private beach run by Sunbird Tourism. The magnificent hotel that sits on the site gives direct access to the clear waters of Lake Malawi. Another popular beach is Kambiri Beach which is nicknamed 'Rock Coast' and also has exciting amenities and activities. Senga Bay is a favourite to many as it is close to Lilongwe, the capital city of Malawi. Senga Bay is a good destination that has everything a person needs when it comes to a lakeside experience.

REASONS

In Salima, there is Livingstonia Beach and Kambiri Beach. There are the ones making headlines, so a lot of people want to see the waterfront, they want to do kayaking, boat riding.

Limbani Bar Dinga | Manager - Giants Travel

Ranking

10

Nkhata Bay

Location: Nkhata Bay

2 Points



Nkhata Bay is a dazzle in the northern part of Malawi. Usually known as a port to many and referred to as the gateway to the islands. Nkhata Bay has a beautiful sandy beach and is one of the places people enjoy Scuba diving. The bay is also a good place for bird watching as well as enjoying a swim in the lake. There are several accommodation options including simple affordable lodges. One of the famous accommodation facilities is the Safari Cottage which offers self-catering and is only a few meters from the shore of the lake.

REASONS

Nkhata Bay is quite different from Mangochi and Salima. There are lodges that are attractive to tourists.

Richard Kaphamtengo | Managing Partner - Mthunzi Travel





TOUR OPERATORS IN MALAWI



▶ 1 2 Travel Africa

Services	Tours: Safaris, Lake trips & Accommodation
Working Hours	Monday - Saturday: 7:00am - 5:00pm
Location	Africa House, Area 43, Lilongwe Mitengo House, Area 10, Lilongwe
Phone Number	+265 993 952 777
Email Address	Info@12travelfafrica.com
Website	https://12travelfafrica.com

▶ Africa Wild Truck

Services	Accommodation Tours, Safari, hiking in Malawi
Working Hours	Monday - Sunday: 7:00am - 5:00pm
Location	Ruo trading center, Mulanje
Phone Number	+265 995 941 542
Email Address	info@afriawildtruck.com
Website	https://www.afriawildtruck.com

▶ Five Stars Travel

Services	Air ticketing, Tour: Safari / Holiday packages, Visa assistance, Car hire, and Hotel booking
Working Hours	Monday - Sunday: 7:00am - 4:30pm *Available 24 hours via email or call every day
Location	Near CBM sign, Area 14, Lilongwe
Phone Number	+265 992 066 906
Email Address	sales@flyfst.com
Website	flyfst.com

▶ Galaxy Travel

Services	Tickets, tours, Visa, travel insurance, Tours: Safari, lake trips & Business trips
Working Hours	Monday - Friday: 8:00am - 5:00pm Saturday 8:00am -12:00pm *Available online 24 hours
Location	Blantyre Lilongwe Mzuzu
Phone Number	+265 887 044 358
Email Address	info@galaxytravelmw.net

▶ Adventures with Colby

Services	Tours (Safari, lake trips, adventure tours), Sustainable tourism consultancy, hiring out outdoor equipment
Working Hours	Monday - Sunday: 7:00am - 5:00pm
Location	164, Nkolokosa, Blantyre
Phone Number	+265 991 803 984
Email Address	info@adventureswithcolbymw.com
Website	https://adventureswithcolbymw.com/

▶ Blueberry Travel

Services	Air travel solutions, airport transfers, car hire, Tours: Safari, adventure tours, lake trip / tours
Working Hours	Monday - Saturday: 7:30am - 7:00pm Saturday 9:00am - 3:00pm *Available online 24 hours
Location	Crossroads Mall, Lilongwe Livingstone Towers, Glynn Jones Road, Blantyre
Phone Number	Sales.llw1@blueberry-travel.com
Email Address	+265 885 098 421
Website	blueberry-travel.com

▶ Floodgates Tours

Services	Tours: Safari, hiking, & historical tours
Working Hours	Monday - Saturday: 7:30am - 5:00pm Open on Sundays and Public Holiday based on demand
Location	Zomba
Phone Number	+265 884 441 037
Email Address	info@floodgatestours.com
Website	floodgatestours.com

▶ Heart Travel and Adventures

Services	Tours: Lakes, mountains, reserves, parks
Working Hours	Monday - Friday: 7:00am - 5:00pm
Location	Akulenje Inn, First floor, Lilongwe
Phone Number	+265 981 345 444
Email Address	Heartadventures265@gmail.com
Website	https://www.hearttravelandadventure.com

► Land & Lakes Safari

Services	Tours: Safari, adventure tours, lake tour / trip Car hire, Fully equipped camping vehicle, Transfers, Hotel booking, local air ticketing
Working Hours	Monday - Friday: 8:00am - 5:00pm Saturday: 9:00am - 2:00pm (Available online 24 hours)
Location	Selous Street, Area 3, Lilongwe
Phone Number	+265 880 757 120
Email Address	info@landlake.net
Website	https://www.landlake.net

► Misuku Expeditions

Services	Tours, Safari, cultural visit, & transfers
Working Hours	Available online 24hrs via email or call
Location	Lilongwe, Malawi
Phone Number	+265 999 629 810
Email Address	info@misukuexpeditionsmw.com
Website	https://www.misukuexpeditionsmw.com

► Orbis DMC

Services	Tours: Safari, adventure tours, & lake trips
Working Hours	Monday - Friday: 7:30am - 5:00pm
Location	Mandala, Blantyre
Phone Number	+265 999 306 631
Email Address	info@orbis-dmc.com
Website	https://www.orbis-dmc.com

► Small Steps Adventure Tours

Services	Tours, Safari, day trips, and excursions
Working Hours	+265 999 773 395 +265 888 705 698
Location	Area 25C, Lilongwe
Phone Number	7:30am - 5:00pm *Available online 24 hours via email
Email Address	info@smallstepsadventuretours.com
Website	smallstepsadventuretours.com

► The Travel Centre

Services	Air tickets, car hire, Hotel booking, Tours: Safaris, Beach holidays, Adventure tours, Tailor made tours, Self-drive tours, and Holiday packages.
Working Hours	Monday - Friday: 8:00am - 4:30pm
Location	City centre, Lilongwe
Phone Number	+265 999 975 785
Email Address	info@travelcentremw.com
Website	travelcentremw.com

► Masamba Adventures

Services	Tours: Safari, adventure tours, fully equipped 4x4 vehicles vehicles, camping equipment, customised itineraries
Working Hours	Monday - Sunday: 9:00am - 5:00pm available on Whatsapp 24hrs
Location	Masamba Gardens, opp. Bwaila Hospital, Area 2, Lilongwe
Phone Number	+265 985 378 917
Email Address	hello@masamba-adventures.com
Website	masamba-adventures.com

► Mthunzi Travel & Tours

Services	Issuance of tickets, hotel booking, car hires, tours: safari, adventure tours & lake trips.
Working Hours	Monday - Friday: 8:00am - 5:00pm Lilongwe
Location	
Phone Number	+265 993 376 610
Email Address	reservations@mthunziholdings.com
Website	mthunziholdings.com

► Rennie's Travel

Services	Travel consultancy, air travel arrangement, car hire, Travel Insurance, Visa, Tours: Leisure travel
Working Hours	Monday - Friday: 8:30am - 5:00pm Saturday 9 am-12 pm
Location	Capital House near ESCOM, Lilongwe
Phone Number	+265 888 307 679
Email Address	Info@renniestravelmw.com

► The Giants Travel

Services	Air tickets, hotel booking worldwide, travel insurance, visa: e-visa, visa on arrival, Schengen visa, Tours: holiday packages.
Working Hours	Monday - Friday: Available online up-to 12 midnight Saturday 8:30am - 2:00pm Sunday 1:00pm - 12:00 midnight (Online)
Location	Lilongwe, Malawi
Phone Number	+265 995 879 054
Email Address	info@thegiantstravel.com
Website	https://thegiantstravel.com

► Ulendo Safari

Services	Air tickets, Tours: Safari, lake & island tours
Working Hours	Monday - Friday: 8:00am - 5:00pm
Location	Presidential Way, Lilongwe
Phone Number	+265 999 970 700 +265 0887 006 250
Email Address	info@ulendo.net
Website	ulendo.net



ART IN MALAWI

We are delighted to bring you this segment of Art in Malawi in our second issue of Travel PLUS Malawi magazine 2023. In this edition, we look at digital and visual art that seemingly becoming popular. Digital art is any artistic work that utilises digital technology in the creative process. As of late, artists are adapting the different advancements in technology in their respective artistic field.

In this article, we focused on visual and digital painting which is a relatively new form of creating art. Recently,

digital paintings are being exhibited at different art exhibitions in the country. The interest in digital paintings is slowly growing as evidenced by people buying digital paintings at one of the art exhibitions held this year.

In this segment, we interviewed Akulu Lipenga, Ronald Nthubula, and Charles Levison to appreciate their art. We hope you will enjoy the chat we had with the artists as well as appreciate their artistic work.

Akulu Lipenga

Visual Artist

Age: 29

Current City: Blantyre

@_akulu

“ I enjoy studying other artists' work and discovering insights in their process. ”

Introduction

I'm a Blantyre-based Freelance illustrator and Animator. I am also the co-founder of Zaluso Arts. I spent some time animating for Studioxygen Africa. I majored in Fine Arts at Chancellor College, although a lot of the work I do I learnt from "Youtube University", which is to say self-taught. I currently work on personal projects and freelance gigs here and there, and I'm also learning how to become a farmer.

How did you start digital painting?

I can't quite remember to be honest, but I think I was interested in it because it didn't require me to buy new materials all the time. I used to trace my drawings and photos of people on a program called adobe illustrator, which is how I think a lot of people start out nowadays. I did a lot of work in adobe illustrator using what are called "vectors", but my work felt very rigid. So I eventually invested in graphic tablets and other drawing programs that would allow me to draw on the computer the same way I draw on paper. Nowadays I rarely draw on paper, but I still try my best to make sure people experience my work physically somehow.

Where do you get inspiration to create your art?

I find inspiration from other artists all over the world, from social media to Pinterest and films I watch.

What is your favorite part about creating art?

I love the ideation stage where I'm doing rough, ugly sketches. This is a stage where anything is possible and you're not really trying to make anything look pretty so there isn't much pressure. I also enjoy studying other artists' work and discovering insights in their process.

Tell us more about the deck of cards you created?

I used to post random drawings on my Instagram page but that felt aimless, so I learnt to work towards projects, preferably projects that would end with some sort of physical "product". So I've done stickers, bookmarks, playing cards, and even a puzzle. The playing cards are just a redesigning of a classic deck of cards, each card has a unique artwork. They also have an augmented reality feature hidden at the back.

What is your dream project?

I would love to make an animated film or video game someday.

Where can people buy your art?

At the moment the only way to buy my art is to contact me, although I sometimes do pop-ups at events like Farmers Market.

Any challenges you have faced over the years?

One challenge that keeps coming up while living in Malawi is the limitations of the things you can get made. For example, with the cards, it was very difficult to find a printer that could produce them consistently, or even make a box. So I ended up having to print them outside the country, and even then there were challenges with forex and entities like MRA.

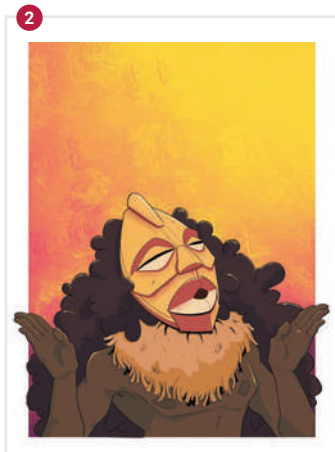
Any artist you would like to collaborate with?

I think it would be interesting to collaborate with Chris Base.

Any advice to young aspiring artists?

Don't be afraid to create and share things that feel weird. Create a lot, and experiment; the sure way to improve is through mileage. Share your work! Your audience will find you.

Notable Artworks



1 Name of art: Nana

A portrait of a painted lady with face tattoos and abstract contrasting waves.

2 Name of art: Receiving of a Blessing

A depiction of a tribal masked man receiving a blessing from his gods

3 Name of art: Akulu Playing Cards

This is a deck of cards that has a unique artwork for each card as a way of making my art more interactive.



Ronald E. Nthubula

Visual Artist

Age: 30

Current City: Lilongwe

@@i_iron_it

“ my work has gone through a lot of transitions which has helped me learn a lot about my craft & develop my creative abilities. ”

Introduction

My name is Ronald Emmanuel Nthubula, the last of two. I was born and raised in Blantyre and I am a digital painter, illustrator, and graphic designer. I am also the Vice-chair of the Visual Arts Association of Malawi, central chapter.

How did you start digital painting?

My digital art journey started in the year 2010 when I was gifted my first digital tablet by one of my uncles, I dabbled in different mediums with my art but my curiosity led me to focus more on digital drawing and painting, I felt that I had more creative freedom drawing and painting digitally.

Where do you get inspiration to create your art?

My inspiration mainly is from everyday life; I create what I see and what I feel. Most of my inspiration comes from past memories or what I simply imagine would be a beautiful creation. But also, the internet which is filled with hundreds of great artists.

How has your practice changed over the years?

My work has gone through a lot of transitions which has helped me learn a lot about my craft and develop my creative abilities. I've developed new drawing techniques which also have challenged me to create and reinvent my style constantly over the years. Also, with the power of social media, there has been a growing interest in my genre of art by more people which has helped me establish a following and the persistence to create.

Where can people buy your art?

I mostly advertise and sell my art on several platforms where I offer several packages depending on the client's preference, but mostly on Facebook as Ronald Emmanuel Nthubula, Instagram @i_iron_it, and my Google business site at roneffects.business.site/, and people can also reach me directly through my personal number which is 0997334708. I also have my art displayed at the Wildlife Centre in Lilongwe under the Visual Arts gazebo.

Any advice to young aspiring artists?

Do what you love and love what you do, the world is full of endless possibilities, and the limits are only a stepping stone to getting you to the next level, you are greater than you imagine, anything and everything you set your mind to is possible.

Any challenges you have faced over the years?

The most significant challenge has been people's acceptance of the new age of Art, especially in Malawi where people rarely understand the complexity and originality of my work. The challenge has given me the opportunity to discover new ways of engaging more versatile audiences, like creating art similar to other mediums and relatable life scenarios.

What is your favourite part about creating art?

The unlimited freedom to explore and generate endless ideas. Imagination is one of the most powerful tools a human being has, it definitely allows me to discover myself through my art in several different ways. I'm reawakened with every new idea which shows me how further I can imagine.

Any artist you would like to collaborate with?

I have an endless list of artists that I'd love to collaborate with, even some from different artistic genres such as music and poetry.

What are your goals as an artist?

I want to create art that people can easily relate to, that gives it a beautiful representation of life which anyone can draw inspiration and motivation from. I also want to see the art sector flourish in this country.

Notable Artworks



Name of art:
I am what I am

This is a very personal piece I did at a time I felt very depressed and unmotivated. I pictured how I felt and what I wanted to associate my feeling with, it gave me the strength to reimagine my distress and create a picture of my pain. This piece was bought by Lucius Banda at the Sand Arts Festival after I explained the story behind it. I believed it resonated with him as well, especially since the event was focused on advocating for mental health.



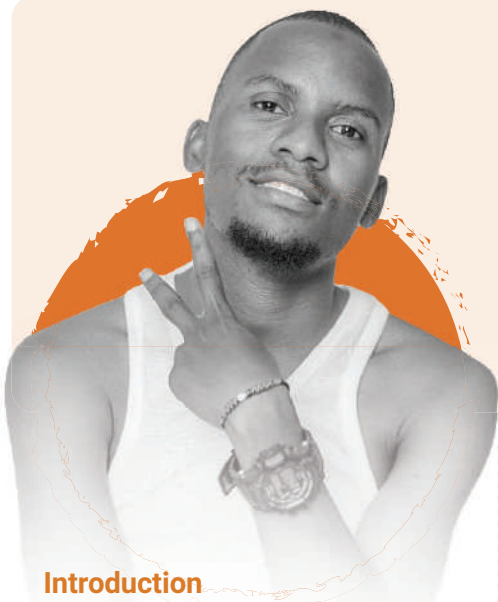
Name of art:
Beautiful Mind

This is a piece about a woman's self-worth and mental health. Growing up with my mother as an only parent, taught me a lot about valuing women, so this piece is a representation of a woman who has peace of mind and is ready to take on the world with every ounce of her body and soul.



Name of art:
Reach for your dreams

This is an illustration of a baby boy who dreams of being a musician, his goals seem out of reach, but he persists in reaching out for them (represented by how he's reaching for the microphone). This piece was created at a time I was surrounded by a lot of musicians and recording studios, a clear inspiration, but this represents myself or anyone who is reaching for their goals and will do whatever it takes to reach them.



Charles Levison

Visual Artist

Age: 31

Current City: Lilongwe

@charleslevison

“ My goal is to publicise Malawi through art and to support my fellow artists ”

Introduction

My name is Charles Levison, I am from Lilongwe. Currently, I am serving as general secretary of Visual Association of Malawi and I am also vice general secretary of the Film Association of Malawi.

How did you start digital painting?

Firstly, my interest was in filmmaking, and then looking at how people appreciate art, I decided that I should go for art. I started art in 2011 and went on to study in Blantyre, at the School of Art in 2014. I majored in art and filmmaking.

What inspired you to create art on Cyclone Freddy?

I was inspired by the actual Cyclone Freddy. Part of my family was affected, so, I was like 'how can I remember this?' As an artist, I thought of doing the digital paintings of Cyclone Freddy to spread the news of the effects and impact of cyclone Freddy.

Who are your biggest artistic influences?

My art style is impressionistic where I use a palette Knife just like Pablo Picasso. So, I can say my influencer is Pablo Picasso but also Andrew Missi, who taught me art here in Malawi

What is the biggest project you have worked on?

I have done two projects, the first is The Boy Who Harnessed the wind inspired art exhibition. We had an exhibition in Zomba, Blantyre and we finished in Lilongwe. 20% of the revenue from the exhibition was donated to William Kamkwamba's hub. The second exhibition was Art with Tea which was my first international exhibition organised by Rare Tea Charity. Rare Tea Charity is a UK-based charity that supports people around Satemwa Tea Estate in Thyolo as well as Mulanje. I made paintings with the aim of supporting students that are supported by the charity.

How important is art in Malawi?

Art is very important because it preserves culture. Mostly if we talk about art, we try to bring an identity to the nation. So, if people come to Malawi they have to know about our culture through art. So mostly we preserve culture and we attract tourists.

How do you know when a painting is finished?

They say art is never finished. For me, I look at colour harmony, if the colours have been harmonised properly and if the proportion is fine, the scale of the subject, there is a story, there is an interesting object, there is a pattern, there is a perspective, there is movement, when all these are joined together, to me, I feel like I'm done.

Where can people buy your art?

I have a website called Levison Gallery and people can buy from there. Levison Gallery is not a personal gallery, I put Malawian artworks by everyone interested. You can also find my work at the Jacaranda Cultural Centre and La Caverna in Blantyre. In Lilongwe, you can find my works at Kalitso Art Gallery and Visual Arts Shop in the City centre.

What are your goals as an artist?

My goal is to publicise Malawi through art and to support my fellow artists as I said I have an online gallery, and I want to see everyone being on one platform.

What is your favourite part about creating art?

My favourite part is the finishing. When you are painting there are a lot of things that happening, you get stressed up, you feel disappointed, you feel like you cannot manage it, you feel down but, in the end, you are inspired to make another art.

Do you have any advice for young aspiring artists?

Malawi does not appreciate art, but this should not demotivate you to pursue art. To upcoming artists, you should not rely on art, if you have a business or another career to focus on, you can do both. This is my honest opinion; I know some other people can say otherwise.

Notable Artworks



Name of art: Jacaranda Market
Inspiration from local market scenes that are commonly established under huge trees in many villages in Malawi. This is a jacaranda tree and people down there are selling commodities.



Name of art: Fishermen
This scenery depicts daily life at Lake Malawi. Where you find people doing different activities i.e. washing, bathing, and fishing



Name of art: Cyclone Freddy
This is a tribute to Cyclone Freddy's victims. I was inspired by the Cyclone, looking at how people were affected, I thought of documenting it so people can remember it as part of our history.

Two-Day Getaway Kasungu



Why Kasungu?

Kasungu National Park is the second largest national park in Malawi located west of central Malawi. With an area of 2100 km², the park has woodland and some hills. There are elephants, buffalos, leopards, lions, hyenas, and different kinds of antelopes such as Puku, Kudu, roan antelope, sable antelope, hartebeest, eland, common duiker, and bushbuck. The park borders Zambia's Lukusuzu National Park. Avid birdwatchers can expect to see kingfisher, African Fish eagle, African Ground Hornbill, and many other birds.

🕒 Best Time to visit

The best time to visit Kasungu National Park for wildlife viewing is in the dry season which is from July to October. This is the best time because you will get to see animals easily as they look for water in water points unlike the rainy season when water is readily available in their hiding places. Regardless, you can visit the park throughout the year.

📍 Before You Go

» Attire

Wear light clothing as it can get hot in Kasungu during the recommended dry season. Also, avoid wearing dark colours especially dark blue and black when going on a game drive as dark colours attract Tsetse flies.

» Food

Make sure you carry food that you can cook at the park as the park only offers self-catering.

» Insect Repellent

Although most areas have Tsetse fly traps in the park, it would not hurt to bring an insect repellent and apply it when you go deep in the forests. Be mindful that its not every repellent that works with Tsetse flies.

Park Fees

Park entry fees

Malawian	K1,000
Resident foreigner	\$7
Non-resident foreigner	\$10

Vehicle entry fees

Malawians	
Less than 2 tons	MK2,100
Between 2 & 5 tons	MK3,500

Non-Malawians

Registered vehicles	
Less than 2 tons	\$3
Between 2 & 5 tons	\$7

Hire of a park vehicle

Individual	\$40
Two individuals	\$20/person
Three and above	\$15/person

Guiding fees

One person per trip	\$10
Group per trip	\$3/person



DAY 1

START

🕒 07:00

Begin your trip from Lilongwe to Kasungu

The journey is a 3-hour drive, approximately 175km.



Scan QR Code for Google Map Directions

🕒 10:00

Arrive at Kasungu National Park Entrance

Pay entry fees before starting your game drive. You will be required to sign in the visitors book.



🕒 10:05

Begin your game drive

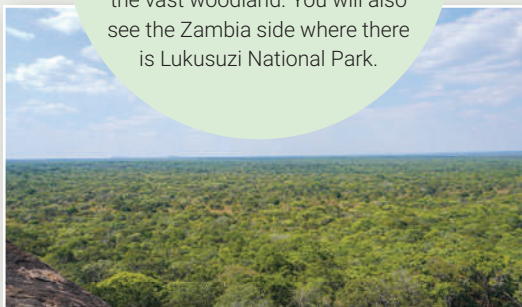
You can use the vehicles available at the park for a game drive or if you have a 4x4 vehicle, you can use yours. Visit Lifupa Dam where you will get to see hippos as well as some antelopes. Also, visit some water points where you will get to see the Puku which is only found at the park in Malawi.



🕒 11:20

Arrive at Black Rock

Climb black rock which gives a spectacular view of the park. At the top, you will be able to see the vast woodland. You will also see the Zambia side where there is Lukusuzi National Park.



Black Rock

🕒 11:00

Proceed to Black Rock

Continue your game drive through the forests to the Black Rock. On your way, if you are in luck, you will get to see elephants, antelopes, and other animals. You will also get to see several birds.



🕒 12:20

Enjoy lunch at Lifupa Lodge

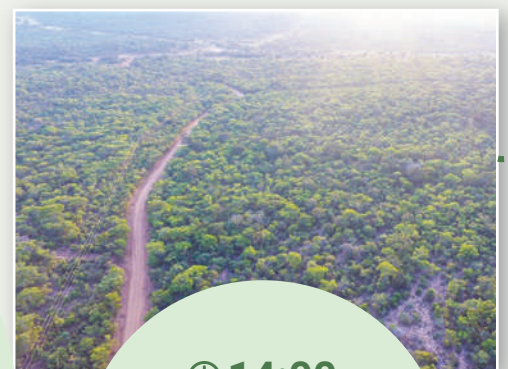
The lodge offers Self-catering only, so you need to bring your own food. There are chefs available at the lodge to prepare your meal, you just have to give them the foodstuffs. Sit on the upper deck of the bar and enjoy the view of Lifupa Dam where animals come to drink water. You may also get a chance to see elephants, antelopes, wild pigs, and other animals.



🕒 14:00

Head to prehistoric sites

This is a 30 km drive through the forests. You may also see some animals as you head to the sites.



🕒 15:00

Arrive at Prehistoric Site

See the historical iron-smelting kilns that were used by iron-age settlers to make iron tools. Visit the site where there are rock paintings that were made during the Iron Age as well.



🕒 17:00

Arrive at Lifupa Lodge

Take a rest at Lifupa Lodge which has different rooms to suit almost anyone. You can also camp at the lodge.



🕒 16:00

Drive back to Lifupa Lodge

Head back to Lifupa Lodge where you can take a rest.

Accommodation Prices

Rooms	Non-Malawians	Malawians
Single standard	\$40	MK15,000
Double standard	\$55	MK20,000
Single Executive	\$60	MK25,000
Double Executive	\$75	MK30,000
Camping	\$7	MK5,000
Dome	\$10	MK10,000
Safari hut	\$10	MK10,000

START

🕒 08:00

Take your breakfast

Take your breakfast as you get ready for the next sightseeing on the other side of Kasungu.



Scan QR Code for Google Map Directions



DAY 2

🕒 09:00

Head to Wimbe

This is a 95km journey that will take you approximately 2 hours and 20 minutes.



🕒 11:20

Arrive at Wimbe

Visit the windmill that Malawi's innovator William Kamkwamba built from scratch using materials from the scrapyards and knowledge from an 8th-grade American book titled 'Using Energy'.



🕒 12:00

Head back to Lilongwe

Begin your journey back to Lilongwe



apongozi

TV SERIES



Apongozi is a new and exciting Television series produced by renowned HD PLUS Creations who previously produced the highly anticipated, Fatsani movie.

The series officially premiered on Zodiak Television in December last year and was airing concurrently on Zodiak's Facebook page.



Producer's Remark

I got the inspiration way back, I used to listen to Zimachitika and Tilitonse... I come from the background of listening to a lot of stories from my grandparents. Growing up in the southern region also inspired me where there are a lot of tea rooms. I realised [that] there are a lot of things that happen. Imagine, a strong woman controlling a bunch of men, how can it look like? That's how I got the inspiration to have a strong woman who has a lot of son in laws, she should have strict rules, so basically, that's how I got the inspiration.

Hastings Golosi [HD PLUS Creative Director]

Apongozi is a dramatic comedy that revolves around a modern-day Chikamwini (Matrilocal) family run by Wakondiye Kawaza (Apongozi), who has five daughters and a son. The series depicts the story of Wakondiye who stays in a compound with her sons-in-law and their respective wives.

The 9-episode season was produced by Hastings Golosi and commissioned by Growth Accelerator Malawi. Golosi said he was inspired by the radio drama series Zimachitika and Tilitonse.

The Apongozi series has been received well by the masses, having thousands watching the series on Zodiak's Facebook page. The producers said they have been largely encouraged by the reception they have received after premiering the first season of the series.

Golosi said he believes the series has



apongozi

TV SERIES

GROWTH
ACCELERATOR
MALAWI

apongozi
TV SERIES



been received well by a lot of people because it was easily accessed by the masses. Golosi further explained that Apongozi has been watched by a lot of people unlike his other production, Fatsani. The series has even claimed the hearts of the young generation to the surprise of Golosi who expected grownups only to fall in love with the series.

Golosi said: "We realised that even this new generation was following the series, I remember I went out and I met people talking about Apongozi... surprisingly they don't watch using their phones, they watch on TV... That's when I knew that we have made it."

The 20-minute episodes featured the late Maria Chidzanja Nkhoma who played the titular role. Her untimely demise before the release of the series was a big blow to the production team and the series' official release was

delayed for months. Golosi said that the whole series was created with Maria Chidzanja Nkhoma in mind hence the delay with the release as they were planning on the next move as well as mourning the multi-talented Chidzanja. The season was dedicated to Chidzanja for her impeccable performance in Apongozi.

The season finale had a lot of spectators in the dark concerning the future of the newly beloved series. Golosi however emphasized that they will continue to produce subsequent seasons. On the issue of when people should expect season 2, Golosi said they will soon issue a press release announcing the dates of production and release.

"Season 2 is going to be amazing. There is a lot of drama coming, there is a lot of conflicts coming and there are a lot of surprises coming," Golosi said.

The multilingual series uses English, Chiwemba, Shona, and Chichewa, as a way of penetrating other countries. Apongozi will soon be available on local streaming platforms to increase access to the series. Golosi reiterated that the series will continue to be produced for several seasons and christened it as 'more than a TV show'.

Apart from HD Plus Creations, the series was co-produced by Kwacha Creations and involved other entities such as Afritrix, Zozizwa, Beauty by Raz, and Flap Good Set up. The comedy-drama series was written by Screen Writers Guild and stars Dorren Jamu, Annie Chipiliro, Midred Mungoshi, Tionge Banda, Esther Bonyonga, Jubeki Monjeza, and Edwin Chonde amongst several other cast members. The series was created by Gilbert Mphatso Moyo, Dalitso Blessed Citizen Chimombo, and Hastings Hago Golosi who also served as the director.



YOUR RELIABLE TRAVEL AND BUSINESS GUIDE



www.malawiplus.com



SUITS OF THE MONTH

Stand a chance to be featured in our next issue of Business PLUS Malawi magazine by posting pictures of yourself in your best business attire.

WHAT TO DO

1. Follow our Instagram page @**businessplus_mw**
2. Tag us in your picture with the hashtag **#suitsmw**

For more enquiries contact: +265 998 311 666

BUSINESS+
PLUS

MALAWI THE MAGAZINE FOR BUSINESS LEADERS
AND THOSE WHO AIM FOR IT

10 THINGS TO DO **in** Blantyre

Blantyre is regarded as the commercial and industrial hub of Malawi. Named after the birthplace of Dr. David Livingstone, Blantyre is the oldest city in Malawi that was founded in 1876. The city has historical places as well as a diverse choice of restaurants, bars, mountains, and several other fascinating things. In this article, we will introduce some of Blantyre's best activities and places.

Discover a new Blantyre you never knew about.



1 Fisherman's Rest

Fisherman's Rest Lodge, Cafe, and Nature Reserve is located along Chikwawa Road just 20 minutes from Blantyre central business district. It is an ideal place to relax and escape the hassle and bustle of city life. Here, you can take a leisurely stroll among indigenous trees and grassland and you will also get to see Impala. You can also bring a picnic or savour a meal from their menu offering different beverages as well as delectable meals. Fisherman's Rest has different lodging apartments such as woodland rooms, bush hide, forest lodge and others. At Fisherman's Rest, you may also become involved in their many programmes, such as working with school children among other things.

Details

Name	Fisherman's Rest Lodge, Cafe & Nature Reserve
Opening Hours	Mon - Sun 08:00am - 05:00pm
Entry	MK2,500 per adult MK1,500 per child
Park entry	MK2,000 per person
Cafe	Saturday & Sunday 09:00am - 05:00pm
Guided Nature Walks	\$15 per group/guide
Project Day	\$25pp minimum 4 people
Phone Number	+265(0)888 836 753
Email	enquiries@fishermansrest.net

*Pre-bookings for groups essential



2 Visit Chichiri Museum

The Museum of Malawi was established in 1966 becoming the first museum in Malawi. The museum is also known as Chichiri Museum and has exhibits on Malawi's history and culture, from Stone Age tools to old banknotes, traditional musical instruments, artefacts, documents on the slave trade and Malawi's independence, and several other things that are inside the museum. Outside the museum is an old 1902 locomotive, Malawi's first fire engine, a bus from when Malawi was known as Nyasaland and a replica of a traditional house. The Museum of Malawi is located along Kasungu Crescent, near Chichiri Shopping Mall in Blantyre. The museum is a must-visit for anyone interested in Malawian culture and history

3 Visit St Michael & All Angels Cathedral

St. Michael and All Angels Church was built between 1888 and 1891 on the original Scottish mission site in Blantyre. The Malawian Department of Antiquities declared the majestic red-brick church as a national monument, and it is one of Blantyre's most prominent monuments. Rev. Alexander Hetherwick identified it as the first permanent Christian Church built between the Zambezi and Nile rivers. The architect, Rev David Clement Scott, and the local labourers had no prior experience constructing this sort of structure. As a result, no design or drawing was used, and the bricks were set and tested before being built. The entirely varied designs of the left and right towers are another distinguishing characteristic of this cathedral.



4 La Carvena & Café Mandala

La Caverna & Cafe Mandala, located on Kaohsiung Road in Blantyre, is an art gallery and cafe with a beautiful setting. The building is Malawi's oldest European structure, built in 1882 with sun-dried grass, mud and bricks, and is a National Monument. After appreciating art and souvenirs available only here, enjoy snacks, dessert or coffee at Cafe Mandala. On sunny days, spend some time in the beautiful garden and enjoy the pleasant breeze.

Contact Details

Name	La Carvena & Café Mandala
Location	Mandala, Blantyre
Phone Number	+265 (0) 999 951 005 +265 (0) 999 917 181
Opening Hours	08:00-16:00 (Mon-Fri) 8:00-14:00 (Sat)



5 Go on a Hike

There are several options when it comes to hiking in Blantyre. You can go on a hike in Ndirande mountain which stands at an altitude of 1,609m, Ndirande Mountain is one of the most popular mountains for hiking. Mount Soche is another option which is 1,530 metres and it is the closest mountain to Blantyre Township and it offers spectacular views of Blantyre from its summit.



Ndirande Mountain



6 Michiru Mountain

At an altitude of 1,460m, Michiru Mountain is located 8km north-west of Blantyre Township and is the closest nature reserve to Blantyre. The area is the only remaining mountain around Blantyre that still has indigenous forest and some wildlife after Ndirande and Soche were devastated in the 1990s and 2000s respectively. Mountain is a great place for families to enjoy day hikes and picnics from around Blantyre. There are several routes to the top, but the most popular one is called 'The Way of the Cross / Njira ya Mtanda'. There are 15 points towards the Cross at the top, depicting the events of Jesus' journey to Golgotha. You don't have to be a Christian to enjoy the well-maintained paths and the atmosphere. You can also enjoy the views over Blantyre while having a snack at a picnic table near the Cross. The hike to the top takes about three hours, but the panoramic views are spectacular.

7 Limbe Market

Limbe Market is an area in the centre of Blantyre, approximately 8 km from Blantyre Town. It is a larger and more local market than Blantyre Market. It is a busy and vibrant market, selling everything from vegetables, fish to second-hand clothes and hardware. Particularly, the vegetable market is one of the largest in Malawi and is very clean and tidy. Even if you don't have anything you want, why not visit and enjoy the interaction with the people.



8 Visit Craft Market

Commonly known as Pa ziboliboli, the market is a public space where different Malawian crafts are showcased and sold to people. The place has several crafts but the dominant ones are wood carvings that's how the place got the nickname of Pa Ziboliboli. The market is located in Blantyre Central Business District along Chilembwe Road. Visit the craft market to buy different things, from chess boards, chairs, decorative bowls, earrings, bracelets, and necklaces.



9 Machinjiri Waterfall

Machinjiri waterfall is a little known awe located in Luwanda, Machinjiri. Locally known as Mathithi, the waterfall can easily be reached by foot. The waterfall is a stunning destination particularly during or immediately after the rainy season when the water level in the river is high. The place is very scenic and you can enjoy a view of the other side of Machinjiri.



10 Manda a Mbuzi, Makhetha

Manda a Mbuzi is a popular spot for those who enjoy eating goat meat. The area is affectionately known as Manda a Mbuzi (Goat Graveyard), but the name should not put you off because its derived from the fact that goats are slaughtered and sold there. Here you can eat braai or fried goat. The meat is fresh as it is slaughtered and cooked on-site. Visit the location to enjoy goat meat with soft drinks, which are also available for purchase.

ONE DAY GETAWAY

Take A Day Trip To Chikwawa



Chikwawa is a district that is close to Blantyre City. It is approximately 50km south of Blantyre which is roughly a one-hour drive. In this article, we will show you where to go and what you can do in Chikwawa.

What to Do at Gulugufe in Chikwawa

Entrance Fees

K3,000/Person (Includes playground)
K1,000/Person (Years 1-2 & 65+)

Note that activities are paid using tokens and tokens are sold at the playground.

1 Token K1,000

Contacts

+265 (0) 980 20 53 80
bookings@gulugufe.com

Working Hours

Monday - Sunday
08:00hrs - 19:00hrs



1 Wall Climbing

Get your muscles working as you climb the 6.5 metres wall. This is a challenge that you can do if you want a bit of adventure. There are precautionary measures that are followed to ensure your safety.

Charge

1 token per go



2 Go on the High ropes

Get on another adventure on the high ropes. Move on the ropes to the other side but at a height of 6-7 metres. This is perfect for adrenaline junkies. You can also go down on the thrilling zipline.



Charges

Adult	3 tokens per go (1.1 meter minimum height and 90kg maximum weight).
Children	2 tokens per go



3 Play Sports

Play different games on one of the grounds. You can play tennis, netball, volleyball, badminton or football. Choose the right game for you to play with your friends or family. You can even play against the people that you can meet there. You can also play other games that are available such as shuffleboard and darts.

Charges

Football / Volleyball ground	3 tokens per hour (including ball)
Badminton ground hire	2 tokens per hour (2 rackets and shuttle included)
Darts	1 token per hour
Shuffleboard	1 token per hour

4 Eat at the Restaurant

Enjoy different delicacies at the restaurant. The restaurant serves hot chocolate, a variety of coffee, and tea as breakfast options. You can also enjoy foods such as burgers, Chambo, lasagne, and their signature Gulugufe pizza. There is also a kids' menu available. You can also enjoy different beverages including milkshakes and assorted beers to serenade your mouth.

Note: No own food and drinks allowed





Mountain

Senga Hills

Best season to hike

May - August (Dry and Clear)

Mountain Height

500 - 600m above sea level

Views from the top

1. Lake Malawi
2. Salima Township

The Hiking Fever of 2023

Hiking is an exciting adventure that can be enjoyed by everyone. Hiking can be a strenuous undertaking but it is good for your body if you want to stay fit. It is also a good way to enjoy beautiful and breath-taking views from the top. Hiking is exciting when you do it in a group, so make sure you invite friends or family. There are seven hills in Senga, you can conquer all of them or just a few.

This article introduces the most popular trail that takes about 5 hours to hike to the top of all seven hills including the highest point in the Senga Hills. If you are short on time or not confident about your stamina, a 90-minute round trip to the top of the first hill will also be a great experience. Senga Bay is very sunny and gets very hot during the day, so be sure to bring plenty of water.

Senga Hills

Senga Bay, Salima

Hiking Difficulty Scale



ESTIMATED HIKING TIME: 1-5 Hours



A view from the first hill



1

Begin your hike from Sunbird Livingstonia Hotel. Turn left before the entrance of Sunbird Hotel.



2

Climb the ladder on a large rock that goes to the top of the first hill. Enjoy the view of Lake Malawi from this hill.



3

Head to the second hill and enjoy the view of Lake Malawi from the second hill.



4

Head to the third hill. There is also a section where you climb up another ladder.



5

Arrive at the summit. View the beautiful scenery as you descend the mountain.



6

Head back to S122, the main street of Senga Bay. You can take a shared taxi or motorcycle taxi back to the starting point, or walk back while touring the lakeside villages.

Going up the mountain

Senga Hills are located on the lakeshore of Senga Bay, Salima District, approximately 120 km east of Lilongwe. It is within the Senga Hills Forest Reserve and is estimated to be 500-600 meters above sea level. The trail is easy to follow and there are even ladders on the hills to easily assist hikers to get to the top. Some of the hills are a bit steep, but if you wear good hiking shoes and are in good physical condition, you should have no problem. First-time hikers should always take a guide, as it can be difficult to find the route. Guides can easily be found at the lodge in Senga Bay or by asking at the Sunset Souvenir Market on the way to Senga Bay from Lilongwe.

Getting to Senga Hills

TIME:
2 hours drive
from Lilongwe

DISTANCE:
120km from
Lilongwe town.



Google Map

LEARN POTTERY MAKING



Pottery is a craft that dates back 10,000 years ago. Pottery is a craft made by combining raw materials like clay, earthen minerals, and water. The compound is shaped into different forms and heated at high temperatures in a kiln to be hardened.

Mchepe Pottery in the outskirts of Lilongwe was established in 2022 under IMATEC Limited. The pottery specializes in making kitchen tableware such as vases, mugs, bowls, plates, and dinner sets as well as floor tiles. If you are wondering where to spend time and have fun, Mchepe Pottery is the place. The fun is not in buying the ready-made products but in the chance to make your own pottery products under the tutorage of the experts at the pottery.



1 Beginner Potter

The class is split into three sections. The first section is theoretical, where you will gain an understanding of the raw materials and, if desired, can learn about excavating them.

After the theory part, you learn how to center clay on the pottery wheel, making a hole in the middle, and pulling the clay up to form the pottery. Your skill and speed in manipulating the clay will be honed over a period of three months. You will begin with making small pottery pieces, and then move on to medium, large, and extra-large. With practice, you will eventually be able to make pottery without assistance. The length of time it will take to reach this point depends on your learning speed.

The next step in pottery-making is learning to decorate the products. To start off, you'll learn to draw basic shapes like trees, people, and animals. You'll also learn various techniques for applying the oxides - the special type of paint that changes color when heated in the kiln. With enough practice, you will be able to complete this process in three months or less, depending on your existing drawing skills.

2 Advanced Potter

An experienced potter does not require constant supervision, so you can visit their workspace during their working hours to create your desired pieces. Afterward, you can return to purchase your finished pieces at a discounted price after they have been fired in the kiln.



Customized Plate

Elephant at sunset Vase

Customized Jag and Mug

Pottery Making Fee & Classes

MK5,000/class per person

MK50,000/month per person

Saturdays & Sundays

Class Name
Beginners & Advanced
Time
02:00pm - 05:00pm

Monday - Friday

Class Name
Advanced
Time
08:00am - 05:00pm

Contact Details

Location Mchepe Village, Lumbadzi
Phone Number +265 995 277 237

Location



Tutors



Boniface Ngomwa
CEO



Gift Sulani
Potter's Wheel expert

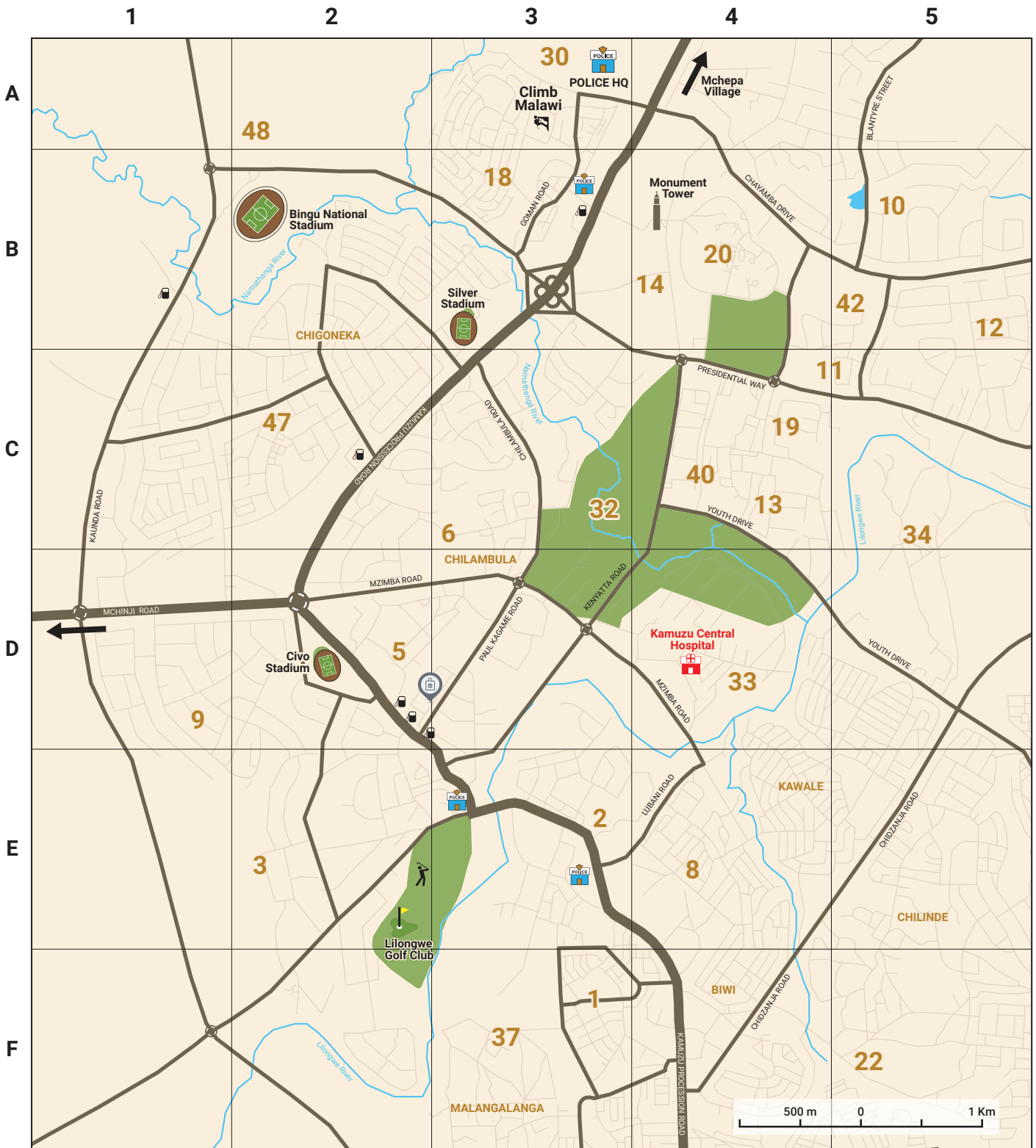


Blessings Mwendo
Decorator

MAP of LILONGWE

Lilongwe became Malawi's capital in 1975, a role previously filled by Zomba. The Old Town is distinct and separate from the new Capital City. The City has much in common with other 20th century urban developments around the world. Its gleaming

modern buildings in their spacious garden-like settings, contrast with the hustle and bustle of Old Town. Both of these different parts of the town are worth touring. Old Town Mall is the best, particularly for those looking for quality souvenirs.




LEGEND

Main Road	Bars	Souvenirs	Police	Golf Club
Second Road	Juice & Smoothie Bars	Filling station	Hospital	
Minor Road	Ice Cream Parlour	Car Hire/Rentals	Rock Climbing	

SHARE YOUR FRAME

Competition Winner

 @ben_mazalo

Congratulations **Ben Mazalo** for winning the Travel PLUS
Malawi Share your frame competition with **161 likes** on Instagram.



Thank you to everyone that participated!



SHARE YOUR FRAME

Tag us in your best photo that shows Malawi's beautiful travel destinations to have it featured on our next issue.

Here are some of our readers travel photos.

 [travelplus_mw](#)



@kwmmambo: Sapitwa, Mulanje



@ligoslodge



@johnkaunda: Zomba



@nyengokuwali



@mkhutchenaomi: Majete Wildlife Reserve



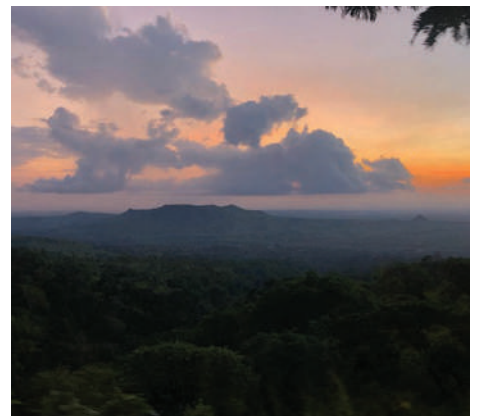
@sirsavage_juan: Cape Maclear, Mangochi



@nikiwe: Mulanje



@cristeet.art:
St Michael & All Angels Cathedral | Blantyre



@its_jus__will2.0



| Sleeping Animal Pot

People of the Sun is a social enterprise that specialises in producing unique, design-led home accessories. The enterprise works with some of the best artisans in Malawi to produce astounding home décor products. The sleeping animal pot is hand carved, out of jacaranda wood and then painted. The design is a caricature of all the curios one sees in the market when in Malawi. The sleeping animals will retell Malawian experiences in a subtle way and perhaps the animals in the national parks. The sleeping animals can be purchased at Pole Living in Area 43 and Four Seasons in Lilongwe or you can order online at www.peopleofthesun.com

Souvenir Shopping

There is no better way to keep a record of your travels than collecting souvenirs. Souvenirs can help you re-live special moments that may otherwise be forgotten. To make souvenir shopping fun and easy, we recommend that you break it down into categories. You can get something long-lasting, something sweet and savoury, and something you can share with friends. When you think of these categories, getting more ideas for souvenir shopping is easier. We visited some souvenir shops and came up with these unique ideas for your souvenir shopping.



| Maleta Gemstones

Maleta Gemstones is a unique product to add to your collection as well as jog your memory of Malawi. Maleta Gems and Jewels was officially registered in 2009 focusing on Handcrafted jewellery fixing, polishing, valuation, gemstones, mineral specimens, mining safari, and gemstone training. The gemstones by Maleta are locally sourced and responsibly mined across

Malawi with Mzimba and Lilongwe as the predominant source.

Being gemstones that are unique to Malawi as well as being polished locally, they are a perfect item to add to your collection. You can purchase Maleta gemstones in Area 10, Plot 82, Lilongwe next to urban café or you can buy via their hotline **+265 998 129 832** which is available 24 hours.



| Hibiscus / Roselle Tea

Roselle Tea is produced by Ujere Investments which was established in 2017. Initially, Ujere started with importing raw materials to produce only one product, along the way they have culminated in producing 30 different products. Currently, Ujere grows plants in Nkhata Bay which are used to produce Roselle Tea and other products. Roselle Tea, therefore, has that Malawian taste with an international appeal. The Roselle is also packed in tea bags making it easy to store and use. Apart from the health benefits of Roselle, the tea is also a good souvenir to

remind you of the warm heart of Africa with its distinctive taste. You can buy the tea at their shop inside Area 18A market or you can contact them on **+265 991 936 251**.

| Mtsai Sweater

Base Afrika is a clothing line that is inspired by ancient African Art, their work has been featured in various fashion shows as well as in Forbes Africa Magazine. Established in 2013, Base Afrika released the Mtsai Sweater Collection last year which is a contemporary cardigan collection with geometric and African-inspired patterns. The unique design features embroidered detail as well as an artsy touch. What makes the sweaters more unique is that each piece is not exactly the same, each has its own distinct design. Some designs combine the colours of the Malawian flag. You can purchase the sweater via Base Afrika's official social media pages or **+265 887 572 278**.



TRAVEL PLUS+

Your Travel Coordinator **MALAWI**

EDITORIAL TEAM



Thandizo Mbeza
CHIEF EDITOR



Douglas Katopola
EDITOR & GRAPHIC DESIGNER



Sydney Mandala
EDITOR



Maxwell Kalele
GRAPHIC DESIGNER



Dennis Mulera
DESIGNER & PHOTOGRAPHER



Steve Govati
EDITOR



Elizabeth Kamanula
SALES & MARKETING



Ryosuke Shimizu
EXECUTIVE DIRECTOR

Published by

 **Design and Printing PLUS**

Publisher's Details

Publisher: ----- Design and Printing PLUS Limited

Location: ----- Corporate Mall, Chilambula road,
----- Area 4, Lilongwe

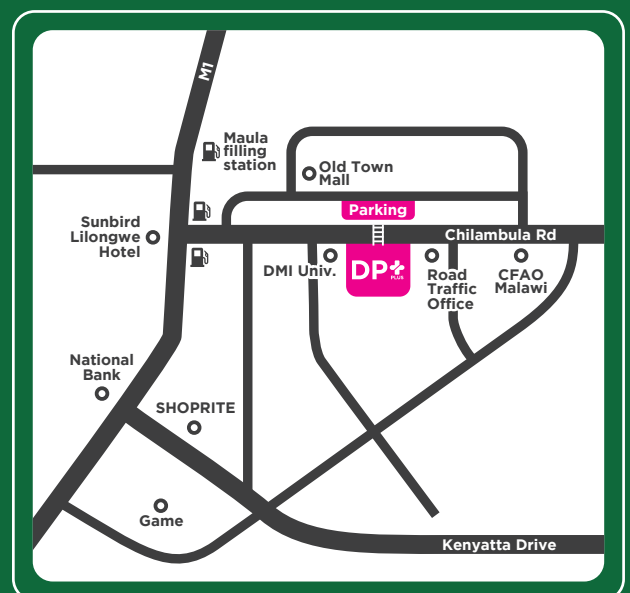
Address: ----- P.O. Box 502, Lilongwe

Phone: ----- +265 (0) 998 311 666

Email: ----- info@designandprintingplus.com

Design and Printing PLUS is a graphic designing and printing company which also publishes **Business PLUS** and **Travel PLUS Magazine**.

The magazines are available at our office or contact us through above details for inquiries and advertisements.



GROW YOUR BRAND WITH OUR QUALITY SERVICES

We focus on providing 'High Quality' and 'Punctual' services.



GRAPHIC DESIGNING



PRINTING



MAGAZINE PUBLISHING



BROCHURE

Designing & Printing



BUSINESS CARDS

Designing & Printing



BOOKLET

Designing & Printing



LEAFLETS

Designing & Printing



LOGO DESIGN



INVITATION CARDS

Designing & Printing



BANNER / BILLBOARD

Designing



PHOTOGRAPHY



CONTACT INFORMATION

🏠 Corporate Mall, Area 4
P.O Box 502, Lilongwe
☎ +265 (0) 998 311 666
✉ info@designandprintingplus.com

WORKING HOURS

08:00 - 12:00
13:00 - 17:00
Monday- Friday
*Public Holidays - Closed

